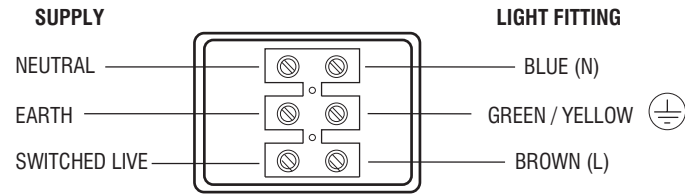


Wiring

Having correctly identified the wiring from your existing light fitting, pull the mains wire through the hole and connect to an approved outdoor rated terminal block(not supplied) in the following way:



Check that...

You have correctly identified the wires.
The connections are tight.
No loose strands have been left out of the connection block.

Technical data

Supply Voltage: 220-240 V~, 50 Hz

Bulb Type: 108672: 10W LED module (SMD), 4000K 108674: 30W LED module (SMD), 4000K
108673: 20W LED module (SMD), 4000K 108675: 50W LED module (SMD), 4000K

This product contains a light source of energy efficiency class **F**.

 Non-replaceable light source |  Non-replaceable control gear



Conformity with all relevant UKCA Directive requirements.



Conformity with all relevant EC Directive requirements.



This is a Class 1 product and must be earthed.



Waste electrical products should not be disposed of with household waste. Please recycle where facilities exist. Check with your Local Authority or local store for recycling advice.



Caution! Risk of electric shock!



This product is rated at IP65.



This product is rated at IK08.

Care and Safety

We recommend cleaning with a soft dry cloth. Do not use solvents or abrasive cleaners as these could damage the finish. For your safety, always switch off the power supply before cleaning.



This LED's are protected by the glass shade. The shade part must be replaced immediately should it become cracked or damaged. This fitting must not be used without the glass shade in place.

For further information, please visit <https://www.lighting-info.co.uk/108672>

V2 20/11/2023

UK Manufacturer: BH17 7BY
EU Manufacturer: Brilliant AG,
Brillantstrasse 1, D-27442 Gnarrenburg

saxby
lighting

Instruction manual

Guard PIR Override Floodlight

108672, 108673, 108674, 108675



www.saxbylighting.com

saxby
lighting

Thank you for purchasing this light fitting. Please read the instructions carefully before use to ensure safe and satisfactory operation of this product. Please retain these instructions for future reference.

Warning

This is a Class 1 product and must be earthed.

Please read these instructions carefully before commencing any work

This unit must be fitted by a competent and qualified electrician.

Install in accordance with the IEE Wiring regulations and current Building Regulations.

Check the pack and make sure you have all the parts listed.

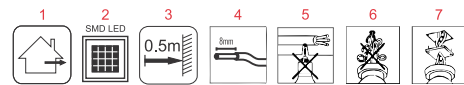
To prevent electrocution switch off at the mains supply before installing or maintaining this fitting. Ensure other persons cannot restore the electrical supply without your knowledge. If you are in any doubt, please consult a qualified electrician.

If replacing an existing fitting, make a careful note of the connections.

The entire unit gets hot whilst on for a period of time.

This product is not suitable for location in or near a marine environment.

Waste electrical products should not be disposed of with household waste. Please recycle where facilities exist. Check with your local authority or retailer for recycling advice.



Product Code	Weight	Max. Projected Area	Dimensions
108672(10W)	0.277kg	0.0087m ²	Proj: 54.1mm H: 168.6mm W: 97.4mm
108673(20W)	0.350kg	0.0125m ²	Proj: 54.1mm H: 189.9mm W: 121.3mm
108674(30W)	0.526kg	0.0216m ²	Proj: 55.2mm H: 227.5mm W: 154mm
108675(50W)	0.699kg	0.0320m ²	Proj: 57mm H: 262.6mm W: 182.3mm

Installation

Existing fittings must be completely removed before installation of a new product. Before removing the existing fitting, carefully note the position of each set of wires.

Note that the switch is turned off before installation.

Do not mount ceiling/wall fitting onto damp surfaces such as newly painted or plastered areas as this may cause discolouration of the finish.

• Hold the product in position and mark the location of the fixing holes. The bracket can be removed from the fitting for ease of installation.

• Fix the bracket to the wall using the expansion bolt (not supplied). Take care to avoid damaging any concealed wiring and pipes. The correct fixings should be used for brick or cavity walls.

Layout

Plan the desired layout of these fittings carefully, ensuring the cables will reach the distances between fittings. Avoid locating any cables in positions that would cause a hazard. Position cables and outdoor rated junction boxes (not supplied) away from areas where they may be at risk from being cut, trapped or damaged.

This product is supplied with 0.8 metres of H05RN-F outdoor grade rubber sheathed cable ready for connection to an approved, outdoor rated terminal block which is not supplied and must be obtained.

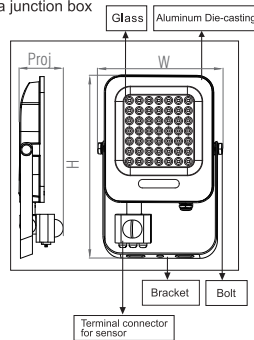
The mains supply cable must have a minimum cross section area of 1.0mm².

The external flexible cable or cord of this luminaire cannot be replaced. If the cord is damaged, the luminaire must be destroyed.

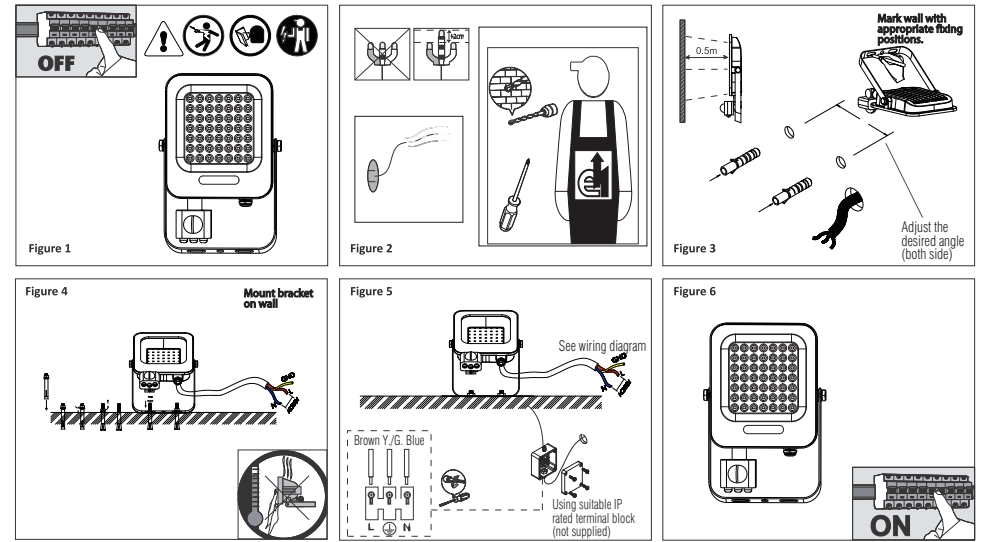
Cables must be protected using suitable conduit or plastic trunking.

This is a floodlight product, and therefore should be positioned where it will not cause a glare hazard.

1. outdoor use
2. type of the LED package
3. minimum distance from the other objects
4. remove insulation as shown on the picture
5. be careful when installing, do not drill where are the power lines
6. attention, do not cross the wires
7. Set the lid first, and install on a junction box



- Using the Allen key (not supplied), loosen the bolts on the both side, and adjust the fitting to the desired angle.
- Wire as detailed wiring.
- Adjust the sensor if needed according to your preferred.
- Turn on your power switch. your light is ready for use.

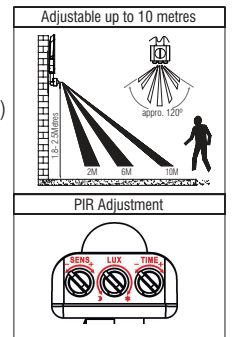


PIR sensor adjustable

- The unit must be installed in a vertical position, and fitted 1.8-2.5m above the ground
- Turning the SENS dial anticlockwise will decrease the detection range (2m-10m)
- Turning the TIME dial anticlockwise will decrease the hold time (10 seconds-7minutes)
- Turning the LUX dial anticlockwise will restrict activation to lower light conditions (<10-2000lux)

Power Source: 220-240V~
 Power Frequency: 50Hz
 Ambient Light: <10-2000LUX (adjustable)
 Time-Delay: Min. 10sec ± 3sec
 Max. 7min ± 2min
 Rated Load: 100W ⚡ + LED
 Power Consumption: approx 0.5W

Detection Range: 120°
 Working Temperature: -20~+40°C
 Working Humidity: <93%RH
 Installation Height: 1.8-2.5m
 Detection Motion Speed: 0.6-1.5m/s
 Detection Distance: Max. 2-10m (<24°C)



Note: when testing in daylight, please turn LUX knob to (SUN) position, otherwise the sensor lamp could not work!
 If the lamp is more than 60W, the distance between lamp and sensor should be 60cm at least.

Manual override mode:

The PIR sensor has a **manual override function** which can be operated by taking the following steps:

When first switched on, the PIR sensor will go into "warms up" self test:

- 1) If there are no action, the PIR sensor "warms up" self test for approx 30 seconds and then goes into AUTO mode;
- 2) If switch the power OFF and ON twice within 3 seconds ((OFF-ON-OFF-ON), the PIR sensor will switch to MANUAL mode.

In AUTO mode, the light is with PIR function:

If switch the power OFF and ON twice within 3 seconds (OFF-ON-OFF-ON), the PIR sensor will switch to MANUAL mode.

In MANUAL mode, the light will remain ON permanently, without the PIR function:

- 1) If switch the power OFF more than 10 seconds, the PIR sensor will return to 'warm up' self test process.

